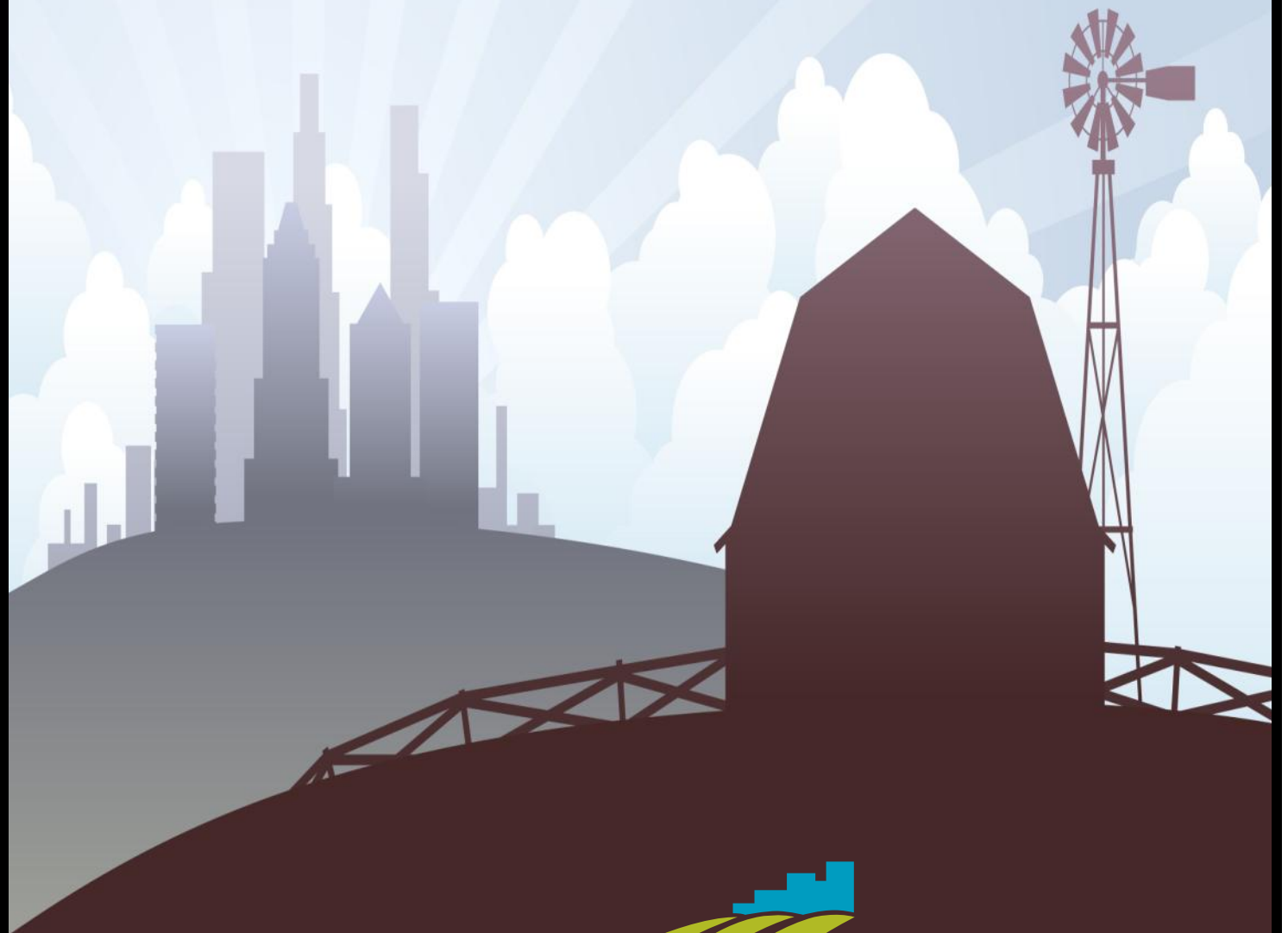


Galesburg Micropolitan Statistical Area

2013

Community Profile



185 S. Kellogg Street, Galesburg, IL 61401
Phone- (309) 343-1194 Fax- (309) 343-1195
www.greda.org



GREDA

Regionally-Based Economic Development

2013 Community Profile

Location



Galesburg is located in West-Central Illinois approximately three hours from Chicago and St. Louis and about one hour east of the Mississippi River. Home to Knox College, Carl Sandburg College and great schools, our region offers a low cost of living as well as a skilled and cost-effective workforce that is immediately available in this transportation hub. The area is served by Interstate 74 and two US highways and has a municipal airport. BNSF rail mainlines carry 150—200 trains through Galesburg per day in seven directions. Over three million square feet of available industrial property and 350 acres of rail and interstate served land are ready to provide transportation to the 35 million people living within 300 miles of Galesburg. The Galesburg area is a great location for transportation companies and their suppliers, assembly and distribution, renewable energy production, commercial and industrial services and much more.

This railroad city has much to experience from unique shopping, antiques, the arts, museums, walking tours and annual events.

The Galesburg Micropolitan Statistical Area includes Knox and Warren Counties. Data shown are for these two counties.

Location Details

Galesburg is the largest city in the Galesburg Micropolitan Statistical Area.

Land Area in square miles	17.75
Persons per square mile	1,813.8

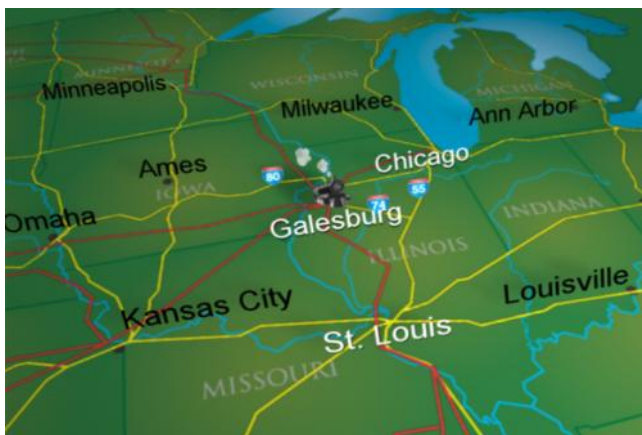
(US Census Bureau's Quick Facts, 2010)

Galesburg is located in the center of the Midwest Region in close proximity to the following cities:

<i>Peoria</i>	47 miles	<i>Quad Cities</i>	50 miles
<i>Chicago</i>	198 miles	<i>St. Louis</i>	215 miles
<i>Indianapolis</i>	258 miles	<i>Kansas City</i>	323 miles
<i>Cincinnati</i>	364 miles	<i>Nashville</i>	459 miles
<i>Memphis</i>	466 miles		

Galesburg is located in West Central Illinois within four interstates:

I-74 - 1.5 miles (north-west)	I-55 - 55 miles (south-east)
I-80 - 30 miles (east-west)	I-88 - 35 miles (north-east)



Income Characteristics

Median Household Income	\$40,590
Mean Household Income	\$49,892
Per capita Income	\$20,477

Knox & Warren Counties; Source: US Census Bureau's 2006-2010 American Community Survey 5-year estimate



Population Characteristics

Population Trends

Source: US Census Bureau's Quick Facts

Location	2007 est.	2009 est.	2011 est.
Galesburg Micro	69,648	69,057	70,626
Knox County	51,973	51,648	52,919
Warren County	17,675	17,409	17,707

Race Ethnicity

	Knox	Warren
White	87.6%	90.9%
African American	7.4%	1.9%
American Indian/ Alaska Native	0.5%	0.2%
Asian	0.7%	0.6%
Native Hawaiian	0.0%	0.0%
Hispanic	4.6%	7.0%
Some Other Race	2.1%	2.1%
One Race	98.4%	98.2%
2 or More Races	1.6%	1.8%

Gender

	Knox	Warren
Male	50.2%	48.6%
Female	49.8%	51.4%

Median Age

41.4	39.9
------	------

NOTE: Data are limited to the household population and exclude the population living in institutions, college dormitories, and other group quarters.

Source: US Census Bureau's SELECTED ECONOMIC CHARACTERISTICS 2006-2010 American Community Survey 5-Year Estimates for Knox & Warren Counties

Climate

Average Temperature	50.3° F
Average Annual High Temperature	60° F
Average Annual Low Temperature	40.7° F
Average Annual Precipitation	36.6"
Average Annual Snowfall	25.4"
Average Annual # of Rainy Days	102

Averages for Galesburg, IL (Source: www.weatherbase.com)

2013 Community Profile

Access to Markets

Galesburg's strategic location relative to the Midwest transportation infrastructure provides great advantages, especially in response to the growing congestion in Chicago, as more manufacturing is done off-shore, meaning more goods need to be shipped across the country.

Central location and major transportation assets are among the greatest assets the Galesburg region has to offer. BNSF Railway Company's seven main lines and railcar "Hump" classification yard channel over 150–200 trains through Galesburg every day. Several distribution companies operate regional and national distribution centers from Galesburg's Business Parks. A 350 acre Logistics Park is shovel ready to help more companies serve Chicago, St. Louis, Des Moines, Indianapolis, Milwaukee and the 35 million consumers in Galesburg's 300-mile radius market.

Railroad Connections

- **Burlington Northern Santa Fe—BNSF Railway** (directly served)
- **United Pacific** (via BNSF to Quad Cities)
- **TP & W Short Line** (directly served)
- **NS, CSX, CN, UP** (via TP&W)

Motor Freight Service

The Galesburg Micropolitan Statistical Area is served by over 100 motor freight carriers, including all major national carriers. With major break-bulk facilities located in the area, consistent direct service to and from the area is assured.

Selected Major Trucking Carriers

- ABF Freight System, Inc.
- Brandt
- RoadLink USA
- Midwest CCX
- Roadway Express, Inc.
- Standard Forwarding
- USF Holland
- Yellow Freight System, Inc.
- D.C. Moore

Air Service

Galesburg Municipal Airport
Quad City International Airport
Peoria Airport
United Parcel Service (UPS)

Air Freight and Cargo Firms



Airborne Express (DHL)
BAX Global
Fed Ex

U.S. Customs Port of Entry
Foreign Trade Zone LPG (Pending)
Public Warehousing



Transit Time

Distance and Travel time from the Galesburg Area to:

City	Highway Miles	Days by Rail	Days by Truck
Atlanta	754	5	2
Chicago	198	1	1
Cleveland	514	4	1
Dallas	866	3	3
Denver	891	4	3
Detroit	450	4	1
Kansas City	345	2	1
Los Angeles	1905	6	4
Milwaukee	239	1	1
Minneapolis	411	3	1
New York	959	5	3
New Orleans	895	5	3
St Louis	215	2	1

Public Transportation

The City of Galesburg offers public transportation through its partnership with Galesburg Transit. Service is provided Monday –Saturday from 7:00 a.m. until 6:15 p.m.

Handivan is a curbside transportation system operated by the City of Galesburg to provide accessible public transportation to individuals who are unable to utilize the bus system or other regular forms of transportation because of a permanent or temporary disability which severely restricts mobility. Handivan provides non-emergency, lift-equipped service to a variety of destinations within the city limits.

For the period of July 1, 2010- June 30, 2011:

- Galesburg Transit provided 153,176 rides.
- The Handivan provided 20,975 rides.



2013 Community Profile

Labor Market Characteristics



Employment Trends

GALESBURG MICROPOLITAN STATISTICAL AREA				
Year	Labor Force	Employed	Unemployed	Rate
2011	34,876	31,919	2,957	8.5
KNOX COUNTY				
Year	Labor Force	Employed	Unemployed	Rate
2011	25,687	23,443	2,244	8.7
WARREN COUNTY				
Year	Labor Force	Employed	Unemployed	Rate
2011	9,189	8,476	713	7.8
GALESBURG				
Year	Labor Force	Employed	Unemployed	Rate
2011	14,934	13,570	1,364	9.1

Source: IDES Local Area Unemployment Statistics (LAUS). Economic Information & Analysis



Employment by Industry

Industry	Knox	Warren
Agriculture, forestry, fishing & hunting, & mining	2.8%	5.6%
Construction	5.1%	5.9%
Manufacturing	10.7%	13.8%
Wholesale Trade	3.4%	3.6%
Retail Trade	11.2%	9.6%
Transportation & warehousing, & utilities	9.2%	8.2%
Information	2.3%	0.6%
Finance & insurance, & real estate & leasing	3.7%	4.0%
Professional, scientific, management, administrative & waste management	4.7%	3.1%
Educational services, health care, and social assistance	27.8%	27.2%
Arts, entertainment, recreation, accommodation & food services	9.7%	10.1%
Other services, except public administration	4.3%	5.3%
Public Administration	5.0%	3.0%

Source: U.S. Census Bureau, American Community Survey 2006-2010



Major Employers

Abingdon Banking Center
 Alexis Fire Equipment Co.
 Aluminum Castings Corp
 Ameren IP
 B.D.I Profile Screens
 BOMAG Americas
 Big River-Galva
 Bridgeway/Bridgeway Training
 Burlington Northern Santa Fe Railway
 Carl Sandburg College
 Community School District #205
 Dick Blick Company
 The Farmers and Mechanics Bank
 Farmland Foods
 First Mid-Illinois Bank & Trust
 First Midwest Bank
 Fusion Tech
 Gale Credit Union
 Galesburg Cottage Hospital
 Gates Rubber Company
 Great Dane Limited Partnership, LTD
 Heir Petroleum
 Henry C. Hill Correctional Center
 Hy-Vee Food Stores
 IH Mississippi Valley Credit Union
 Johnson Building Systems, Inc.
 Kewanee Hospital
 Kleine Equipment
 Knox College
 Knox County
 Knox Warren Special Education
 Koppers, Inc.
 Menards
 Midwest Bank of Western IL
 Monmouth-Roseville District #238
 Monmouth College
 NAEIR
 National Coatings Inc.
 Nichols Trucking
 OSF St. Mary Medical Center
 & OSF Holy Family Medical Center
 Petersen Health Care, Inc.
 RFMS
 The Register Mail
 Smurfit-Stone
 St. Mary Square Living Center
 Thrushwood Farms
 Tompkins State Bank
 United School District #304
 Wal-Mart-Galesburg IL
 Wells Fargo

2013 Community Profile

Education



Knox County—Population 25+ by educational attainment

	Estimate	Percent
Less than 9th grade	1,484	4.0
9th-12 Grade, No Diploma	3,911	10.7
High School Graduate	13,978	38.3
Some College, No Degree	8,075	22.1
Associate Degree	3,539	9.7
Bachelor's Degree	3,698	10.1
Graduate or Professional Degree	1,857	5.1
Total	36,542	100%

Warren County—Population 25+ by educational attainment

	Number	Percent
Less than 9th grade	453	3.9
9th-12 Grade, No Diploma	1,237	10.6
High School Graduate	3,985	34.1
Some College, No Degree	2,752	23.6
Associate Degree	926	7.9
Bachelor's Degree	1,518	13.0
Graduate or Professional Degree	799	6.8
Total	11,670	100%*

Source: US Census Bureau (ACS) 2006-2010 *total of 99.9 for rounding errors

K-12 Enrollment 2011-12

City of Galesburg

	Number
Total Enrollment	4,672
Total Public	4,267
Total Private	405

Source: Galesburg Board of Education and allprivateschools.org

United District 304

	Number
Total Enrollment	961
Total Public	961
Total Private	0

Source: www.united.k12.il.us

Other Galesburg Area Educational Facilities

Facility	Number
Other Area Public School Systems	9
Private and Parochial Schools	2
Trade and Technical	1
Community College	1
Four-Year College	9

Community

	Enrollment
Carl Sandburg College	3,405

Four Year

	Enrollment
Knox College	1,420
Monmouth College	1,321
Western Illinois University	12,554
Bradley University	5,200 (appx)

Source: Official websites— sandburg.edu, knox.edu, monm.edu, Bradley.edu, wiu.edu

Knox College



Knox College is a selective, four-year liberal arts college consistently ranked among the top 100 national liberal arts colleges by U.S. News and World Report. The Washington Post lists Knox College as one of the top liberal arts colleges based on its commitment to access, independent research and community service — where more than 85 percent of students complete an independent research or creative project by the time they graduate.

Known for its diversity and academic quality, Knox College educates students from 45 states and 44 countries and offers more than 400 performances, lectures, cultural and sporting events each year.

Carl Sandburg College



Carl Sandburg College is dedicated to serving the educational needs of west and central Illinois. The college has served the area for over 40 years with accreditation that has been approved by the North Central Association of Colleges. Individual and community improvement through education is the goal of Carl Sandburg College. To achieve this end, CSC strives to give individuals the ability to think critically, to realize their human potential, and to become a constructive force in their environment. The mission of Carl Sandburg College is to provide accessible, quality education in a caring environment by keeping the learner's needs at the center of decision making and by working in partnership with communities of the College district.

CSC has many cooperative alliances that develop programs with neighboring institutions and seek to maintain or expand alliances within and beyond the College district. Along with providing exceptional associate degree level education for students, CSC also features over 50 occupational programs and continuing ed/adult learning in a hi-tech environment. Carl Sandburg College believes in providing educational experiences of occupational, preparatory, and continuous nature. A wide range of services accessible to the students and to the community are made available as well. The college's motto and message to the community is "Find your future at CSC!"

Monmouth College



Monmouth College is a private, selective, residential liberal arts college, offering majors in the natural sciences, social sciences, arts and humanities, as well as outstanding academic advising, small, seminar-style classes, varied internship and study abroad opportunities, and summer research experiences to

thoughtful, intellectually engaged and ambitious students from across the United States and around the world.

2013 Community Profile

Quality of Life



Cost of Living

Overall	Galesburg	Chicago	Peoria	U.S. Average
Housing	69.5	138.1	95.9	100
Food	98.5	107.6	98.2	100
Transportation	89.5	116.7	111.9	100
Utilities	107.3	105.4	97.8	100
Health	99.1	104.3	99.0	100
Miscellaneous	99.1	107.4	106.2	100

Source: ACCRA Cost of Living Index: First Quarter 2012— Index values and average prices in relation to the national average of 100 percent.

Home Price Comparison—New Construction

*Galesburg	\$211,200
Des Moines	\$273,753
Quad Cities (IL&IA)	\$323,239
Chicago	\$364,750
Seattle	\$369,360
Boston	\$437,000
Los Angeles	\$525,662
New York (Manhattan)	\$1,269,429

* Numbers are based on a 2,400 square-foot home, new construction
 * Data provided by the ACCRA Cost of Living Index, First Quarter 2012.

Medical Care

Hospitals	3
Number of Beds	295
Physicians	124

The region offers two Level II trauma centers, up-to-date land and air ambulance service, cancer center, immediate care center, modern community mental health facility, home nursing and residential care facilities. In addition, Galesburg has one of 32 level "A" hazardous material response teams (Hazmat) in Illinois.

(Source: OSF Hospitals, Cottage Hospital)

What Knox & Warren Counties Have to Offer

RECREATION AND ENTERTAINMENT

Public Parks	36
Public Swimming Pools	8
Public Golf Courses	4
Country Clubs	4
Public Libraries	4
Museums	6
Art Galleries	3
Symphony Orchestra	1
Community Theatres	2
Indoor Sport Centers	2
YMCA	2
Water Parks	1

COMMUNITY SERVICES

Motels/Hotels	13
Number of Rooms	598
Bed and Breakfast	8
Restaurants	128
Number of Banks	16
Number of Savings and Loans	2
Number of Credit Unions	6

MEDIA

Local Newspapers	5
Daily	1
Weekly	4
Local Radio Stations	7
Campgrounds	6

CHURCHES

Protestant	111
Catholic	11
Jewish Synagogues	1
Mormon	2

ANNUAL EVENTS

Martin Luther King Jr. Celebration Holiday Breakfast • Knox College International Fair • Chocolate Festival • Rootabaga Jazz Festival • Sandburg Days • Mardi Gras • CSC Concert Series • Knox Galesburg Symphony • The Big Read • Kites over Lake Storey • Farmers Market • More on 34 • Galesburg Railroad Days • Big Bang Boom • Taste of Galesburg • Great Balloon Race • Galesburg Heritage Days • River-2-River Cruise Night • National Stearman Fly-In Days • Art in the Park • Galesburg Scarecrow Festival • Knox County Scenic Drive • Christmas Parade and Shopping • Historic Downtown and Seminary Street • Cruise Night • Christmas Around the World • Pottery on the Square • Market Alley Music Dayz • Monmouth Farmers Market • Warren County Prime Beef Festival • Warren County Fair • Knox County Fair



Message from the Chairman of the Board

On behalf of GREDA board members and investors, I am pleased to introduce the 2012 GREDA Annual Report. I am excited about the enhanced changes GREDA has implemented this last year. The new talent that makes up GREDA's team accentuates its overall efforts for continued future success. To concur on the efforts made by GREDA I selected a few topics to highlight as well as new goals and standards that GREDA has set to help the overall wellbeing of Region Economic Development in the Western Illinois Region.

- GREDA continued its business attraction efforts through several initiatives, including our attendance of key transportation, energy, and agribusiness industry conferences; a contract with ROI, a lead generating firm that arranged phone conferences with companies worldwide that were interested expanding their markets and relocation to the Midwest; and our ongoing marketing efforts.
- GREDA signed a service agreement with the City of Galesburg as a partnership to implement the Business Retention, Expansion, and Development (BRED) Program to retain businesses in the region, improve their competitiveness, facilitate their expansion, and improve the communication between the private and public sectors.
- GREDA provided business assistance through one-on-one meetings to determine the best options for the business owners, and where appropriate, provide referrals to one of our many partners.
- GREDA engaged the public sector by providing help in administering requests for proposals, serving as a board member for the regional bond authority, serving on Knoxville's TIF committee, and hosting public forums.

This year we look forward to expanding on last year's successes, and boldly move forward with new initiatives that strengthen our regional economy and position the Western Illinois Region as business friendly. The following is a list of some of the major new initiatives for 2013.

- Facilitating a strategic planning process that will engage our investors and partners in defining our focus for the next five years.
- Developing a targeted business attraction program that identifies competitive advantage for industry clusters, companies, and suppliers; develops industry specific marketing materials; and identifies and engages potential companies and site selectors.
- Investing in a development financing tool such as a Multi-Bank Community Development Corporation with the repositioned assets of Knox County Development Corporation.

With these initiatives in mind, combined with efforts from our board members, investors, supporters, volunteers, public partners and staff; I am looking forward to the future, as we deliver on our mission for Regional Economic Growth. Thank you for your efforts and commitment to GREDA and the overall economic growth and development of Western Illinois.

Richard Kowalski, Chairman of the Board

*Sincerely,
Dick Kowalski, Chairman*



2013 Community Profile

Economic Development



GREDA is a 501(c) 6 not-for-profit economic development company with a land development subsidiary. Working with regional partners, including Knox County and the cities of Monmouth and Galva, IL. GREDA's development team can provide unique services to meet the needs of businesses in the region. As a private and confidential point of contact, GREDA provides information and services available to new and expanding companies in the Galesburg region, as well as referrals to ally organizations with specific areas of expertise. Regional information and services include:

- Industrial site and building profiles
- Business incubator facilities
- Enterprise Zone program information
- Low-interest business financing program information
- Employer training program information
- Local vocational and computer training centers
- Tax Increment Financing (TIF) program information
- Build-to-suit and lease-back options
- Business start-up assistance
- General, statistical and demographic information on Galesburg and the surrounding region
- Cost information and comparisons
- Transportation information
- Wage and labor market information

GREDA Team

Leo Dion, President

Greg Mangieri, Senior Consultant

Derek Shugart, Director of KCDC

Amber Richmond, Marketing and Communication Director

Dick Kowalski, Chairman of the Board

Patsy Gray, Bookkeeper

Mary Plue, Administrative Assistant

Visit our Website at
www.greda.org

Economic Development Contacts

Leo Dion

President

GREDA

309-343-1194

Greg Mangieri

Senior Consultant

GREDA

309-343-1194

Derek Shugart

Director of Knox County Development Corporation

GREDA

309-343-1194

Amber Richmond

Marketing & Communication Director

GREDA

309-343-1194

Cesar Suarez

Economic Development Director

City of Galesburg

309-345-3680

Steve Brody

Executive Director

Galesburg Area Chamber of Commerce

309-343-1194

Paul Schuytema

Director of Community Development

City of Monmouth

309-734-2141

